



FZ Series

Centrifugal Pump



Feature :

- Aluminium motor housing
- Light weight and superior heat dissipation
- Back Pull out construction
- Assure easy maintance and Inspection
- Colse-couple design for space saving

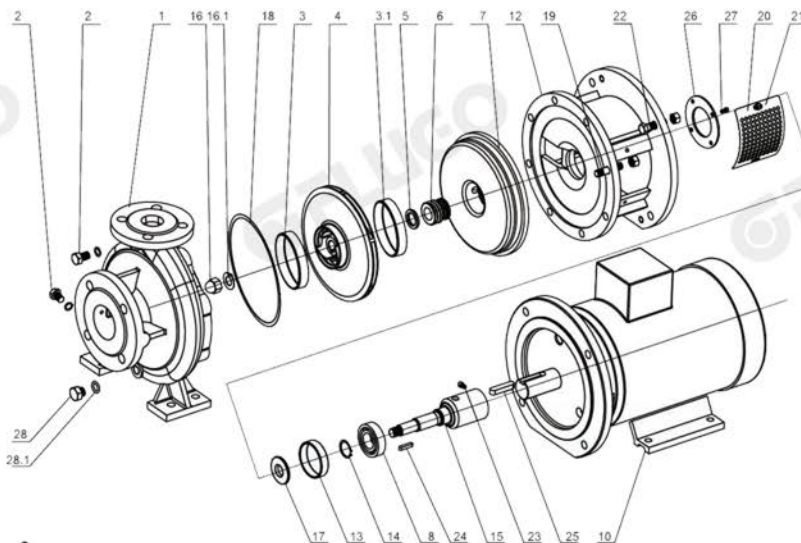
Specifications:

Casing	Cast Iron
Impeller	Bronze
Shaft	ASTM 420 - Stainless Steel
Shaft Seal	Mechanical Seal - M3N Heavy Duty Model
Max temp	95C
Flange	PN16



Bronze impeller

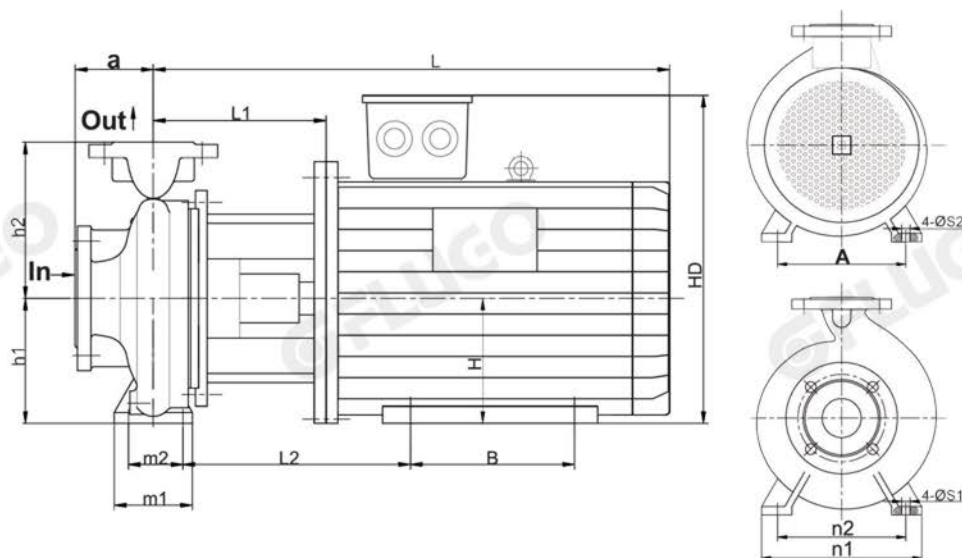
Constructions:



Code	Part Name	Code	Part Name
1	Casing	16	Impeller Nut
2	Plug & Washer	16.1	Lock Washer
3	Wear Ring (Front)	17	Rubber Slinger
3.1	Wear Ring (Back)	18	Casing Gasket
4	Impeller	19	Screw Stud & Nut
5	Seal Seat	20	Shield
6	Mech. Seal	21	Screw
7	Casing Cover	22	Screw Bolt & Nut
8	Bearing	23	Screw
10	B35 Motor	24	Key
12	Adapter	25	Key
13	Rubber Check	26	Bearing Cover
14	External Circlips	27	Screw
15	Shaft	28	Plug & Washer

Performances:

Type	Motor (KW)	IEC	In	Out	Imp	Rated Flow			Maximum		
						Flow (m3/hr)	Head (m)	Eff %	Flow (m3/hr)	Head (m)	Eff %
FZ 32/13-01102	1,1	80	2"	1.25"	107	13	11	45%	15	15	45%
FZ 32/13-01502	1,5	90	2"	1.25"	124	17	15	55%	20	20	62%
FZ 40/13-02202	2,2	90	2.5"	1.5"	120	31	15	65%	40	19	74%
FZ 50/13-04002	4	112	2.5"	2"	124	45	18	68%	70	19	70%
FZ 50/13-05502	5,5	132	2.5"	2"	135	55	20	71%	70	21	71%
FZ 50/13-07502	7,5	132	2.5"	2"	139	70	20	71%	85	27	73%
FZ 50/16-11002	11	160	2.5"	2"	174	65	35	72%	90	30	72%
FZ 65/16-15002	15	160	3"	2.5"	174	110	32	73%	135	42	73%
FZ 32/13-02202	2,2	90	2"	1.25"	135	16	22	61%	23	25	61%
FZ 40/13-04002	4	112	2.5"	1.5"	139	32	24	72%	45	26	72%

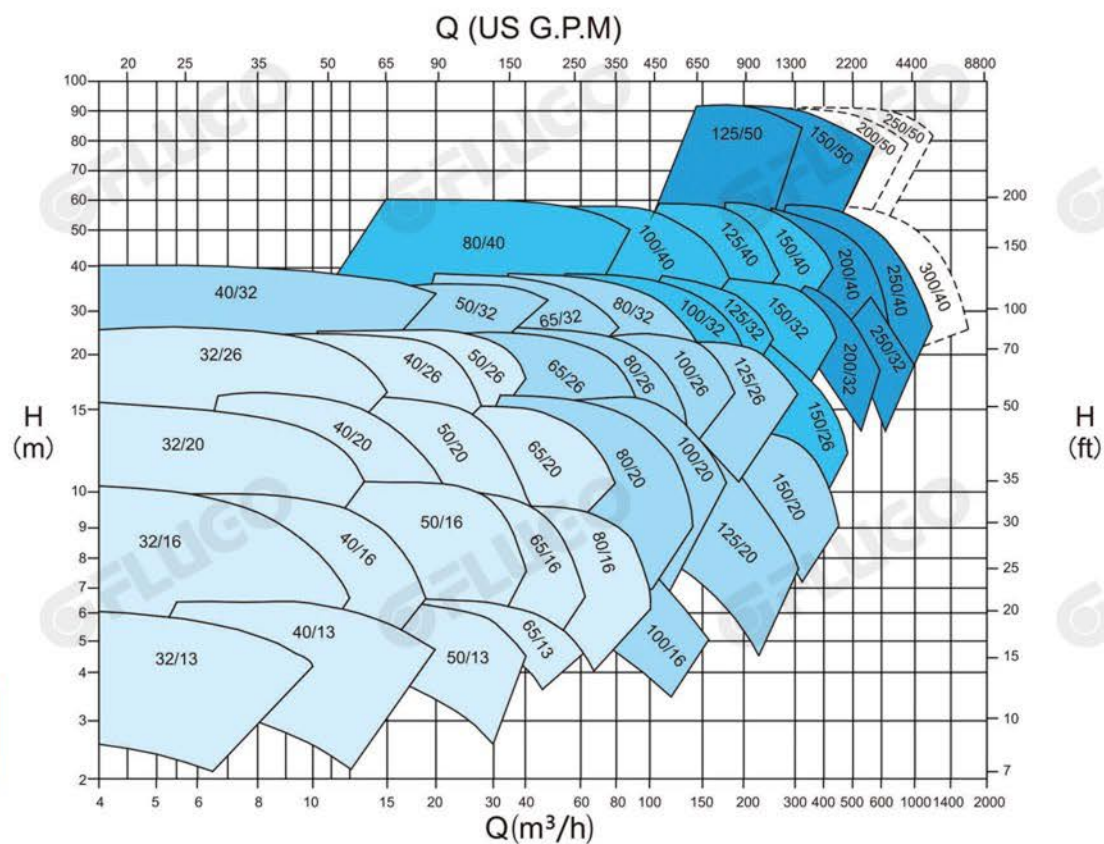
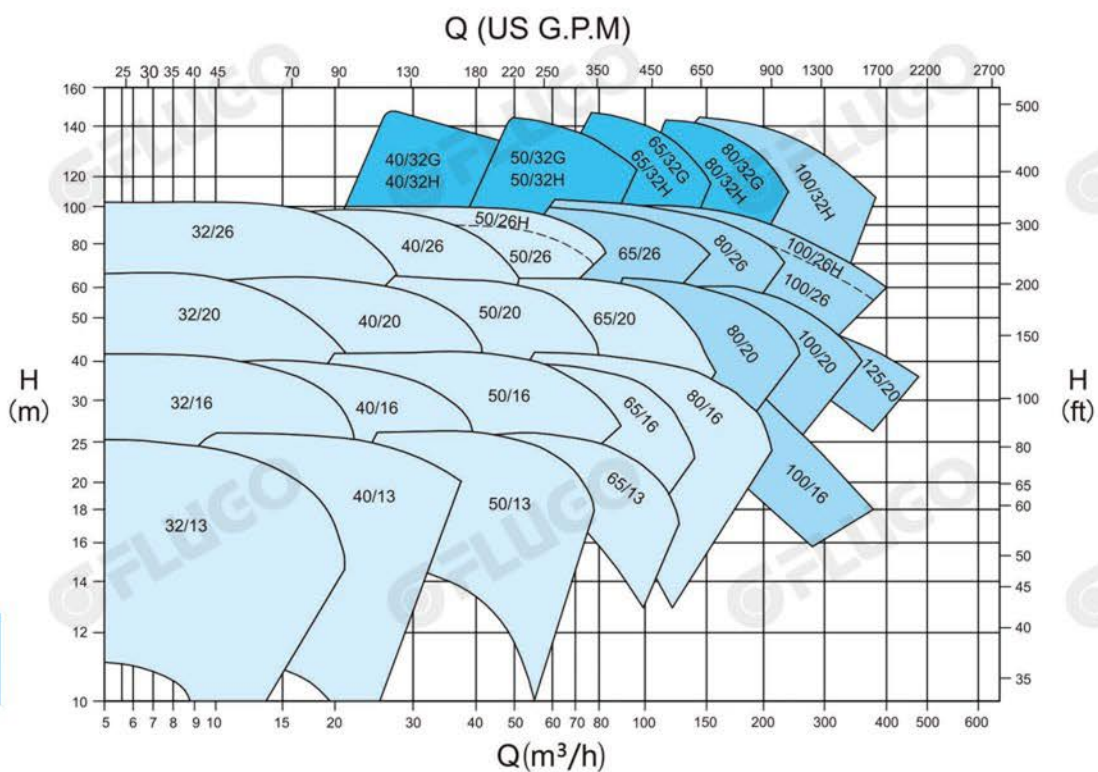


FZ Installation dimensions:

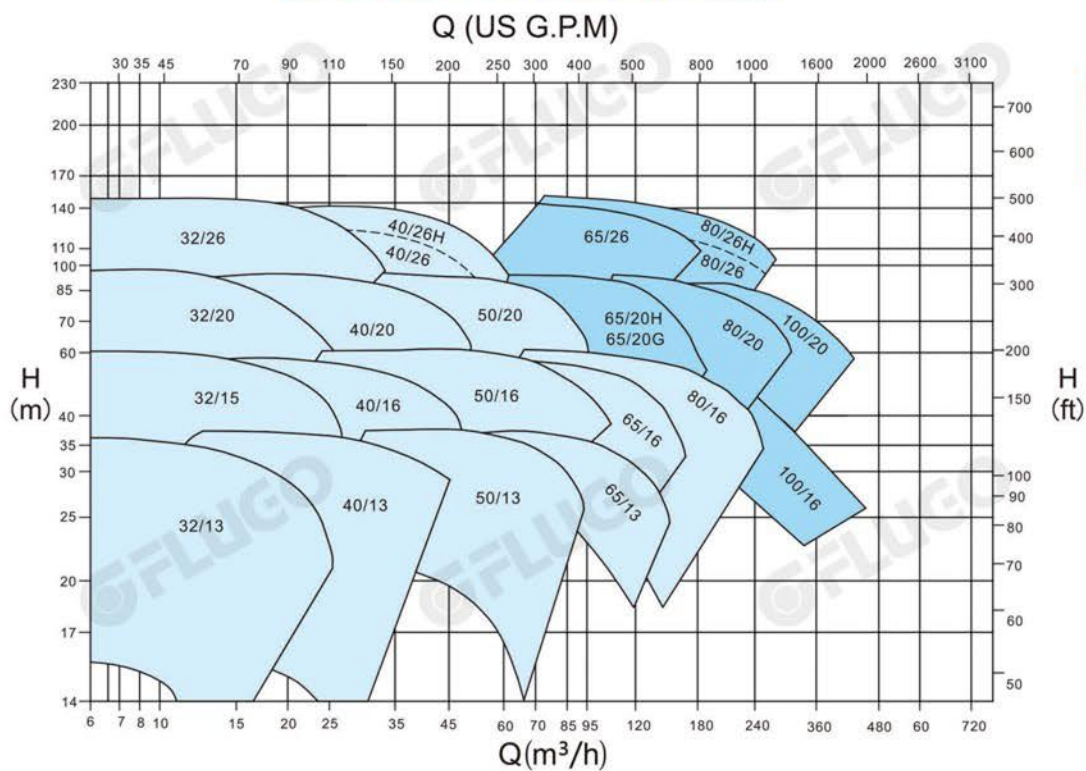
Type	h1	h2	L	a	HD	n1	n2
FZ 32/13-01102	112	140	407	80	220	190	140
FZ 32/13-01502	112	140	422	80	250	190	140
FZ 40/13-02202	112	140	447	80	250	210	160
FZ 50/13-04002	132	160	504	100	300	240	190
FZ 50/13-05502	132	160	577	100	345	240	190
FZ 50/13-07502	132	160	577	100	345	240	190
FZ 50/16-11002	160	180	725	100	420	265	212
FZ 65/16-15002	160	200	725	100	420	280	212
FZ 32/13-02202	112	140	447	80	250	190	140
FZ 40/13-04002	112	140	504	80	300	240	190

Type	L1	L2	A	B	H	m1	m2	S1	S2
FZ 32/13-01102	152	167	125	100	80	100	70	14	10
FZ 32/13-01502	152	173	140	100	90	100	70	14	10
FZ 40/13-02202	152	173	140	125	90	100	70	14	12
FZ 50/13-04002	164	199	190	140	112	100	70	14	12
FZ 50/13-05502	187	241	216	140	132	100	70	14	12
FZ 50/13-07502	187	241	216	140	132	100	70	14	12
FZ 50/16-11002	220	293	254	210	160	100	70	14	15
FZ 65/16-15002	220	280,5	254	210	160	125	95	14	15
FZ 32/13-02202	152	173	140	125	90	100	70	14	10
FZ 40/13-04002	164	199	190	140	112	100	70	14	12

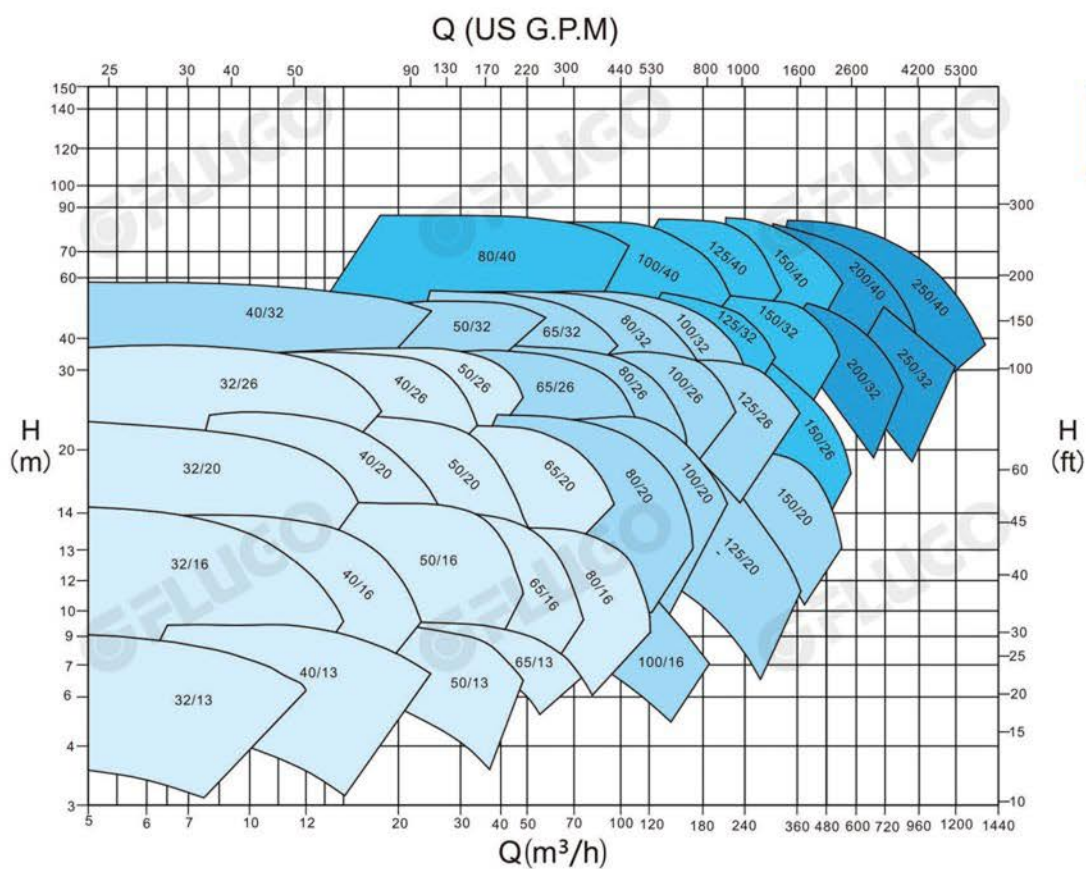
© Field Chart FZ Series (50HZ)



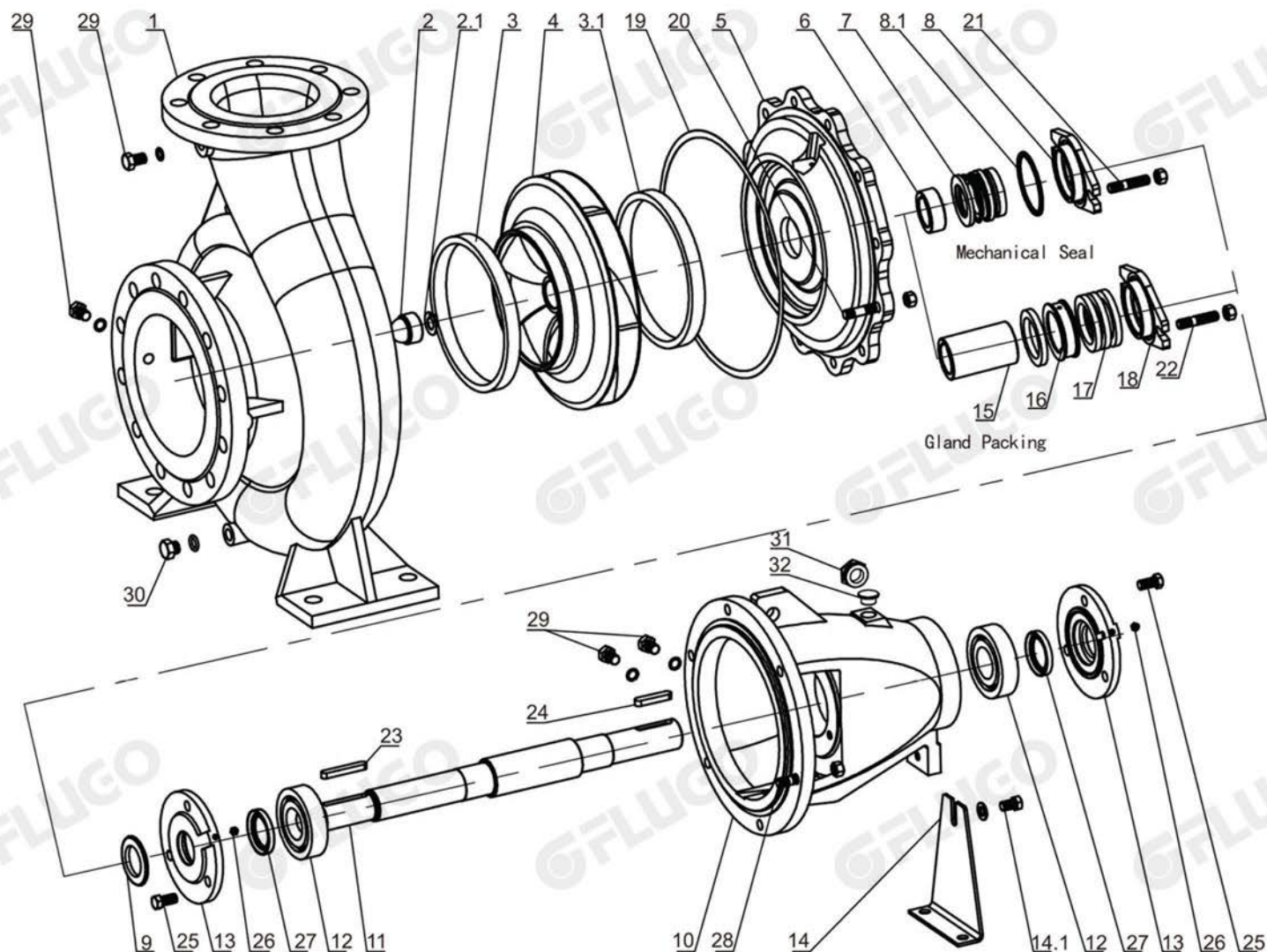
Field Chart FZ Series (60HZ)



3500rpm



1750rpm



Code	Part Name
1	Casing
2	Impeller Nut
2.1	Lock Washer
3	Wear Ring (Front)
3.1	Wear Ring (Back)
4	Impeller
5	Casing Cover
6	Shaft Spacer
7	Mech.Seal
8	Seal Cover
8.1	O-ring
9	Rubber Slinger
10	Bearing Frame

Code	Part Name
11	Shaft
12	Bearing
13	Bearing Cover
14	Support Foot
14.1	Bolt & Nut
15	Packing Sleeve
16	Packing Seal Cage
	Locating Sleeve
17	Gland Packing
18	Gland Cover
19	Casing Gasket
20	Stud & Nut
21	Stud & Nut

Code	Part Name
22	Stud & Nut
23	Key
24	Key
25	Screw Bolt
26	Oil Nipple
27	Felting
	Oil Seal
28	Stud & Nut
29	Plug & Washer
30	Plug & Washer
31	Oil Scale
32	Oil Cover



Authorized Distributor

FZ Series
Centrifugal Pump